

CITY OF KELOWNA

BYLAW NO. 9417

Road Closure and Removal of Highway Dedication Bylaw (A Portion of Paret Road)

A bylaw pursuant to Section 40 of the Community Charter to authorize the City to permanently close and remove the highway dedication of a portion of highway on a portion of Paret Road

NOW THEREFORE, the Municipal Council of the City of Kelowna, in open meeting assembled, hereby enacts as follows:

1. That portion of highway attached as Schedule "A" comprising 7.4 m² shown in bold black as Closed Road on the Reference Plan prepared by Douglas A. Goddard, B.C.L.S. and completed on 25th day of April, 2005, is hereby stopped up and closed to traffic and the highway dedication removed.
2. The Mayor and City Clerk of the City of Kelowna are hereby authorized to execute such conveyances, titles, survey plans, forms and other documents on behalf of the said City as may be necessary for the purposes aforesaid and to affix the Corporate Seal of the said City thereto.

Read a first, second and third time by the Municipal Council this 13th day of June, 2005.

Adopted by the Municipal Council of the City of Kelowna this day of ,2005.

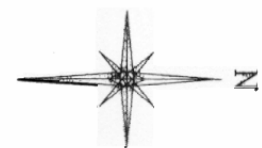
Mayor

City Clerk

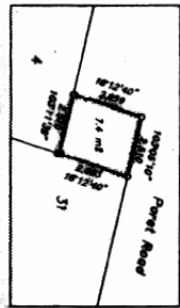
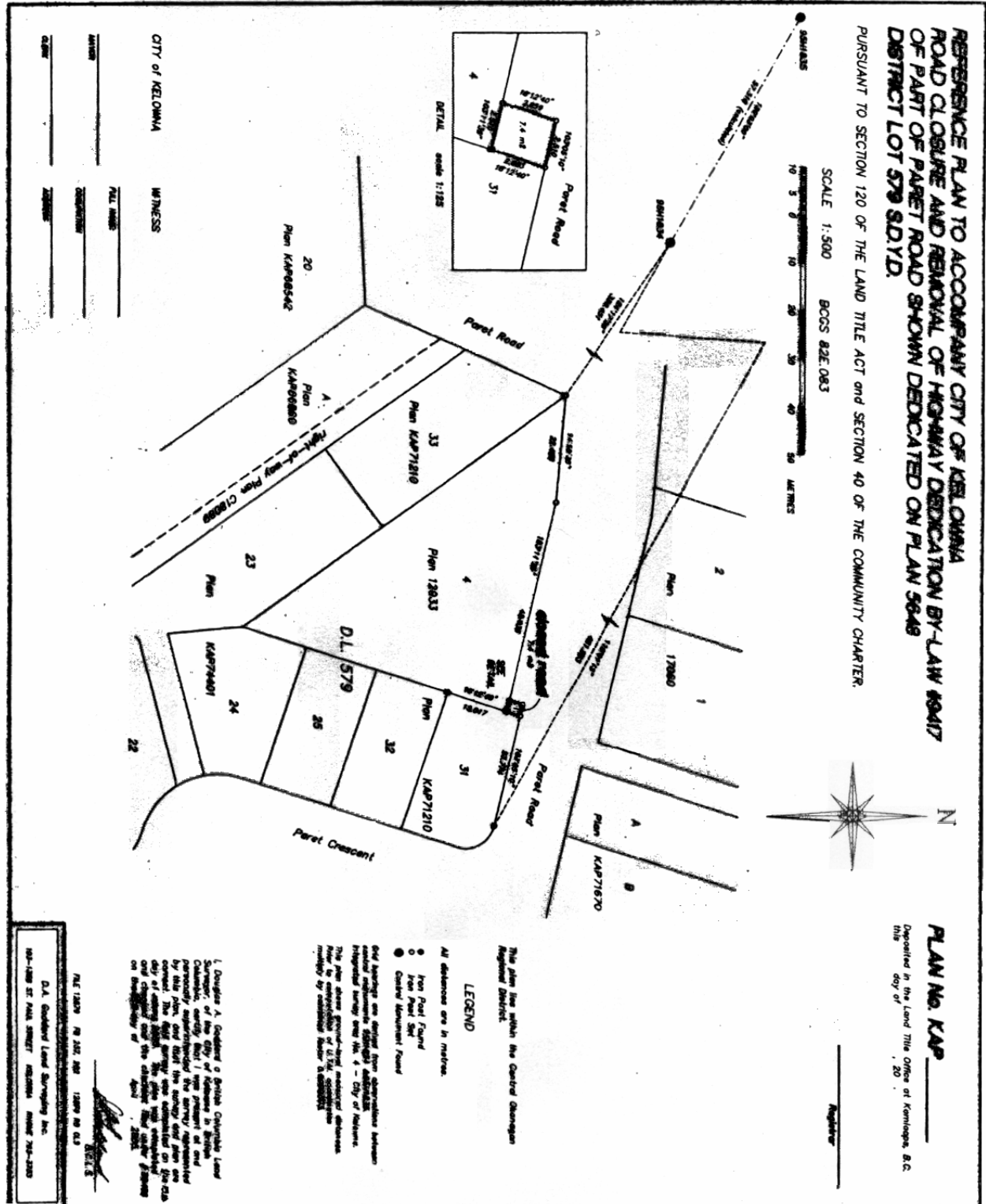
**REFERENCE PLAN TO ACCOMPANY CITY OF KELOMNA
ROAD CLOSURE AND REMOVAL OF HIGHWAY DEDICATION BY-LAW 6047
OF PART OF PARET ROAD SHOWN DEDICATED ON PLAN 5648
DISTRICT LOT 579 S.D.Y.D.**

PURSUANT TO SECTION 120 OF THE LAND TITLE ACT and SECTION 40 OF THE COMMUNITY CHARTER.

SCALE 1:500 BCCS 82E.083



PLAN No. KAP _____
Deposited in the Land Title Office of Kelowna, B.C.
this day of _____, 20__



This plan lies within the Central Okanagan Regional District.

LEGEND

- All distances are in metres.
- Iron Pin/Found
- Iron Pin/Not Found
- Center Monument/Found

Our bearings are either from observations between several monuments, or from astronomical observations, or from a magnetic survey over No. 4 - City of Kelowna. This plan shows bearings from magnetic observations. The plan is correct to the nearest centimetre, and is subject to the usual errors of magnetic observations.

I, Douglas A. Gaudet, a British Columbia Land Surveyor, certify that I am the person at and personally supervised the survey, represented by this plan, and that the survey and plan are correct. The date of the survey and plan is the day of _____, 20__.

REG 120N / 78 252 268 / 12079 80 63
SHEET 2

D.A. Gaudet Land Surveying Inc.
160-1800 ST. PAUL STREET, KESWICK, BC V2A 2S3

CITY OF KELOMNA WITNESS
FULL NAME _____
SIGNATURE _____
DATE _____